

Installation Instructions

S-5!® Warning! Please use these products responsibly! Visit our website or contact your S-5! distributor for available load test results. The user and/or installer of these parts is responsible for all necessary engineering and design to ensure the VersaBracket™ has been properly spaced and configured.

Notice to S-5! users: Due to the many variables involved with specific panel products, climates, snow melt phenomena, and job particulars, the manufacturer cannot and does not express any opinions as to the suitability of any S-5! assembly for any specific application and assumes no liability with respect thereto. S-5! products are tested for ultimate holding strength on various profile types and materials. This information is available from the S-5! website: www.S-5.com. This document is an installation guide only and the photographs and drawings herein are for the purpose of illustrating installation tools and techniques, not system designs.

The VersaBracket is made for trapezoidal exposed-fastened profiles.

Tools Needed

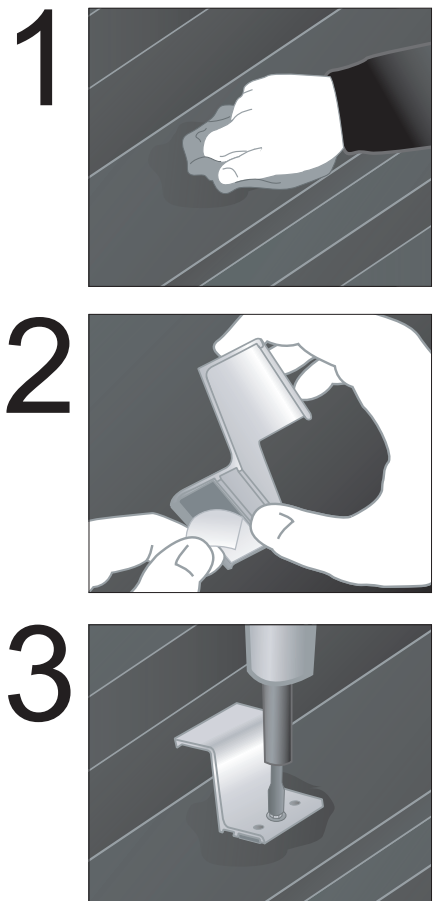
- Electric Screw Gun
- Rag
- String Line

VersaBracket should be placed in the flat of the panel, between the ribs, and must be mounted directly over and into the supporting structure of the roof, i.e. wood decking, wood or steel purlins or trusses, NEVER into the metal roofing material alone.

To ensure brackets are installed in a straight line, install a single VersaBracket on each end of the roof at a measured, consistent distance from the bottom edge of the roof. Use a string line between the two brackets. Mount the remaining VersaBracket along the string line, directly into the supporting structure of the roof.

To Install VersaBracket™

1. Determine the location of the supporting structure of the roof. When possible, secure the VersaBracket using all hole locations; when not possible, always use the two upslope hole locations. The only surface preparation necessary is to simply wipe away excess oil and debris.
2. Peel the release paper from the base, align, and apply to roof surface.
3. Secure the VersaBracket by drilling screws into the pre-punched holes directly into the supporting structure of the roof (3 holes are provided for convenience and versatility). Consult the S-5! Load Table for more information.



P: 800-284-1412

F: 903-759-3598

W: www.lmcurbs.com

S-5!® Warning! Please use this product responsibly!

S-5!® Warning! Please use this product responsibly! Products are protected by multiple U.S. and foreign patents. For published data regarding holding strength, fastener torque, patents, and trademarks, visit the S-5! website at www.S-5.com.

Copyright 2013, Metal Roof Innovations, Ltd. S-5! products are patent protected. S-5! aggressively protects its patents, trademarks, and copyrights. Version 112513.

These instructions are for use by those experienced in the trade. Always follow appropriate safety precautions and use appropriate tools.