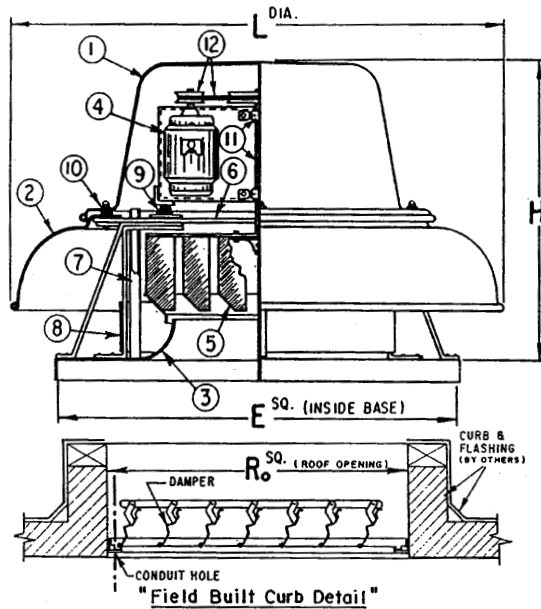


Domex - Belt Drive



Legend

- | | |
|--------------------------|-----------------------------|
| 1. Motor Dome | 7. Conduit Guide |
| 2. Discharge Apron | 8. Weather Baffle |
| 3. Spun Inlet Venturi | 9. Anti-Vibration Mounts |
| 4. Electric Motor* | 10. Main Fastening Assembly |
| 5. Centrifugal Fan Wheel | 11. Fan Shaft and Bearings |
| 6. Top Plate | 12. Belt and Pulley |

Dimensional Data

	KB420	JB48•	MB542•
L DIA.	63	73	98
H	38	45 1/2	50
E† SQ.	52 1/2	59	63 1/2
Ro SQ.	44	50	55


† Outside dimension of curb should be 1 1/2" less than 'E' dimension

All dimensions in inches.

• Motor Dome and Discharge Apron shipped separately.

* At PennBarry's option, large frame motors may be removed after testing and shipped separately.

Material: Spun Aluminum Housing

 PENNBARRY™ 1401 North Plano Road, Richardson, TX 75081 Ph: 972.234.3202 Fax: 972.497.0468 www.PennBarry.com	<h2>Submittal Sheet</h2> <h3>Domex - Belt Drive</h3> <h3>Spun Aluminum Centrifugal Roof Exhausters</h3> <h3>High Capacity</h3>
--	--

This drawing illustrates our understanding of order requirements. When approved, it represents details for fabrication, as such, PennBarry will not be responsible for revisions in the field or other changes after release for fabrication. Published and protected by PennBarry, Richardson, TX. All rights reserved. May not be reproduced partially or in full without permission from the publisher. No rights conveyed to manufacture partially or in full, use or sell either the method of construction represented or any invention in any way related thereto.

Form ES-DMX
Revised March 2005