

**IMPORTANT TO SPECIFY**

INSIDE MANUAL RELEASE (MANDATORY)

OUTSIDE MANUAL RELEASE

ORDER # \_\_\_\_\_ DATE \_\_\_\_\_

PROJECT \_\_\_\_\_

CUSTOMER \_\_\_\_\_

ARCHITECT \_\_\_\_\_

REPRESENTATIVE \_\_\_\_\_

FINISH MLL (STD.)

LEXAN XL1 POLYCARBONATE MATERIAL

CLEAR

TRANSLUCENT WHITE

OTHER \_\_\_\_\_

STOCK NUMBER	INSIDE CURB DIMENSIONS		QTY.
	WIDTH	LENGTH	
HSD 5555	48	X 48	
HSD 5566	48	X 60	
HSD 5578	48	X 72	
HSD 5596	48	X 90	
HSD 5510Z	48	X 96	

NOTES:

\* FACTORY MUTUAL APPROVED.

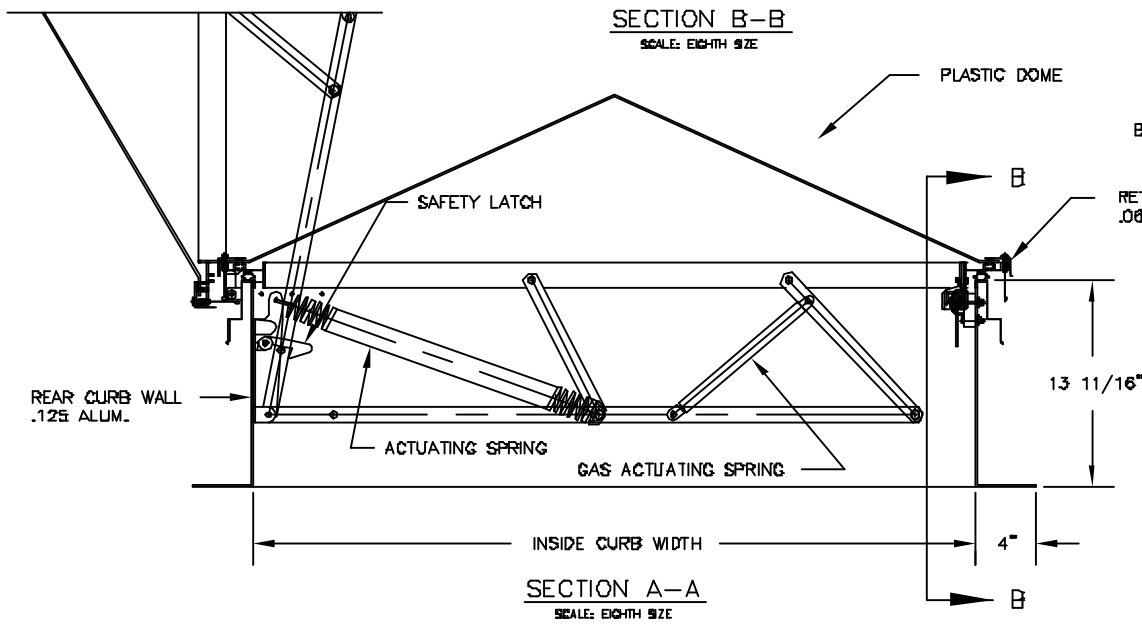
UNIT DESIGNED TO OPEN AGAINST A 10 PSF SNOW LOAD.

MODEL: HSD

F. M. APPROVED FIRE VENT  
SINGLE LEAF  
PLASTIC LID-SINGLE DOME

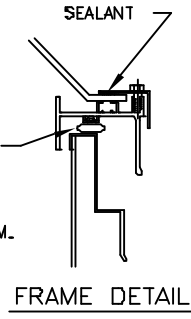
**NATURALITE**  
SKYLIGHT SYSTEMS  
728 AIRPORT ROAD • TERRELL, TX 75168 • 972-251-6486

7-31-97 DWG. NO. HSV-3,04B



**SECTION B-B**  
SCALE: EIGHTH SIZE

**SECTION A-A**  
SCALE: EIGHTH SIZE



**FRAME DETAIL**