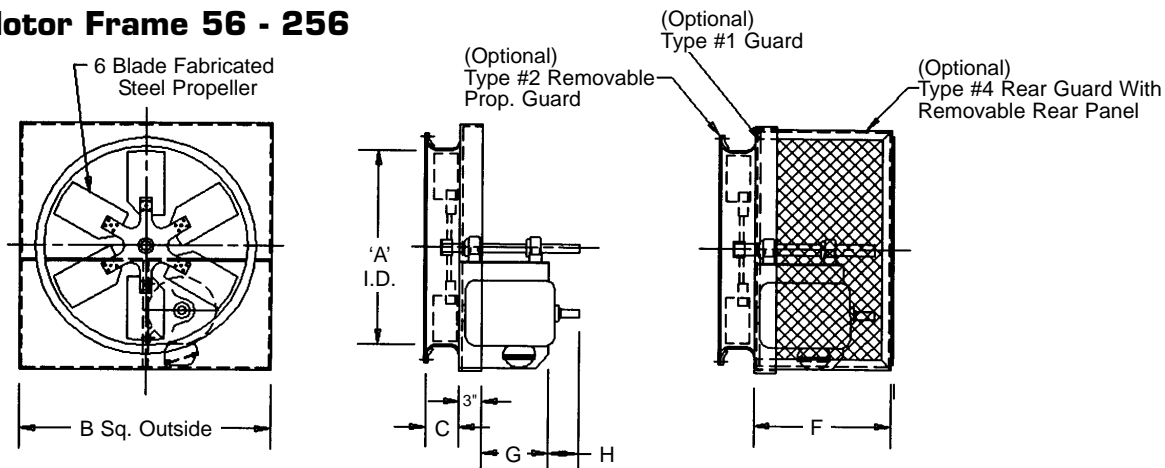


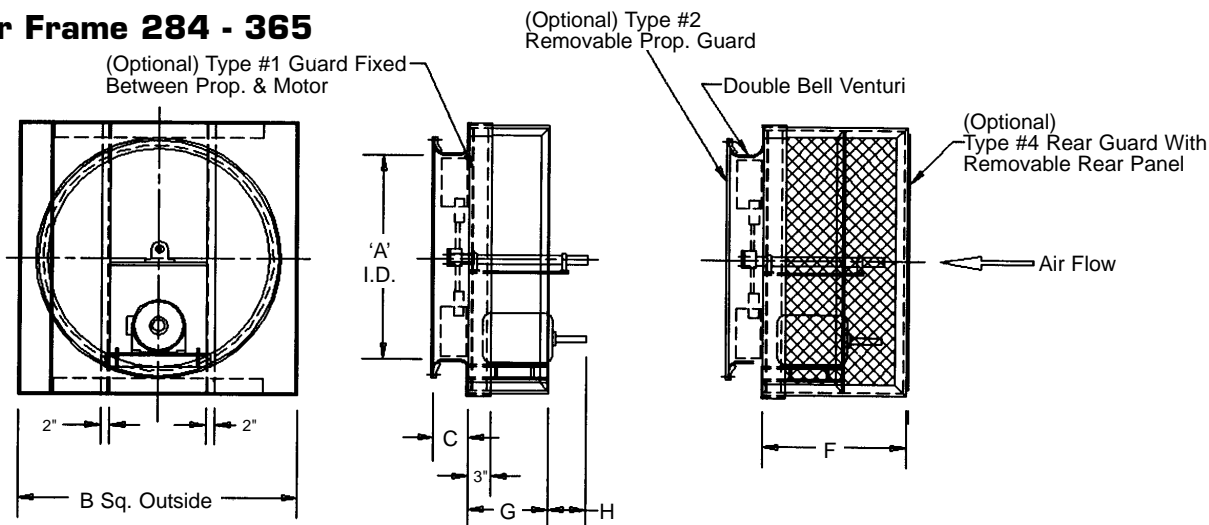
# MPB Panel Fan

## Belt Drive, Motor Frames 56 - 256 & 284 - 365

### Standard Motor Frame 56 - 256



### Large Motor Frame 284 - 365



### Dimensional Data

Size	A	B	C	Design 1				Design 2				Large Motor Frame				
				F	G	H	Max. Motor	F	G	H	Max. Motor	F	G	H	Max. Motor	
024	24.25	28.00	6.25	18.88	13.00	3.00	184T	—	—	—	—	—	—	—	—	—
027	27.28	34.00	6.25	18.88	13.00	3.00	184T	—	—	—	—	—	—	—	—	—
032	32.34	38.00	7.50	21.88	16.00	3.00	215T	—	—	—	—	—	—	—	—	—
036	36.38	42.00	9.00	21.88	16.00	3.00	215T	—	—	—	—	—	—	—	—	—
042	42.44	48.00	9.75	21.88	16.00	3.00	215T	—	—	—	—	—	—	—	—	—
048	48.50	54.00	9.75	20.88	14.00	4.75	184T	27.88	20	4.75	256T	30.13	26.38	4.75	286T	
054	54.56	60.00	11.75	20.88	14.00	4.75	184T	27.88	20	4.75	256T	33.13	28.38	4.75	286T	
060	60.63	66.00	11.75	20.88	14.00	4.75	184T	27.88	20	4.75	256T	35.88	31	4.75	365T	
072	72.75	78.00	11.75	29.50	20.63	4.75	184T	36	28.38	4.75	256T	40	35.5	4.75	365T	



PENNBARRY™

1401 North Plano Road, Richardson, TX 75081

Ph: 972.234.3202 Fax: 972.497.0468

www.PennBarry.com

## Submittal Sheet

### MPB Panel Fan

#### Motor Frames 56 - 256 & 284 - 365

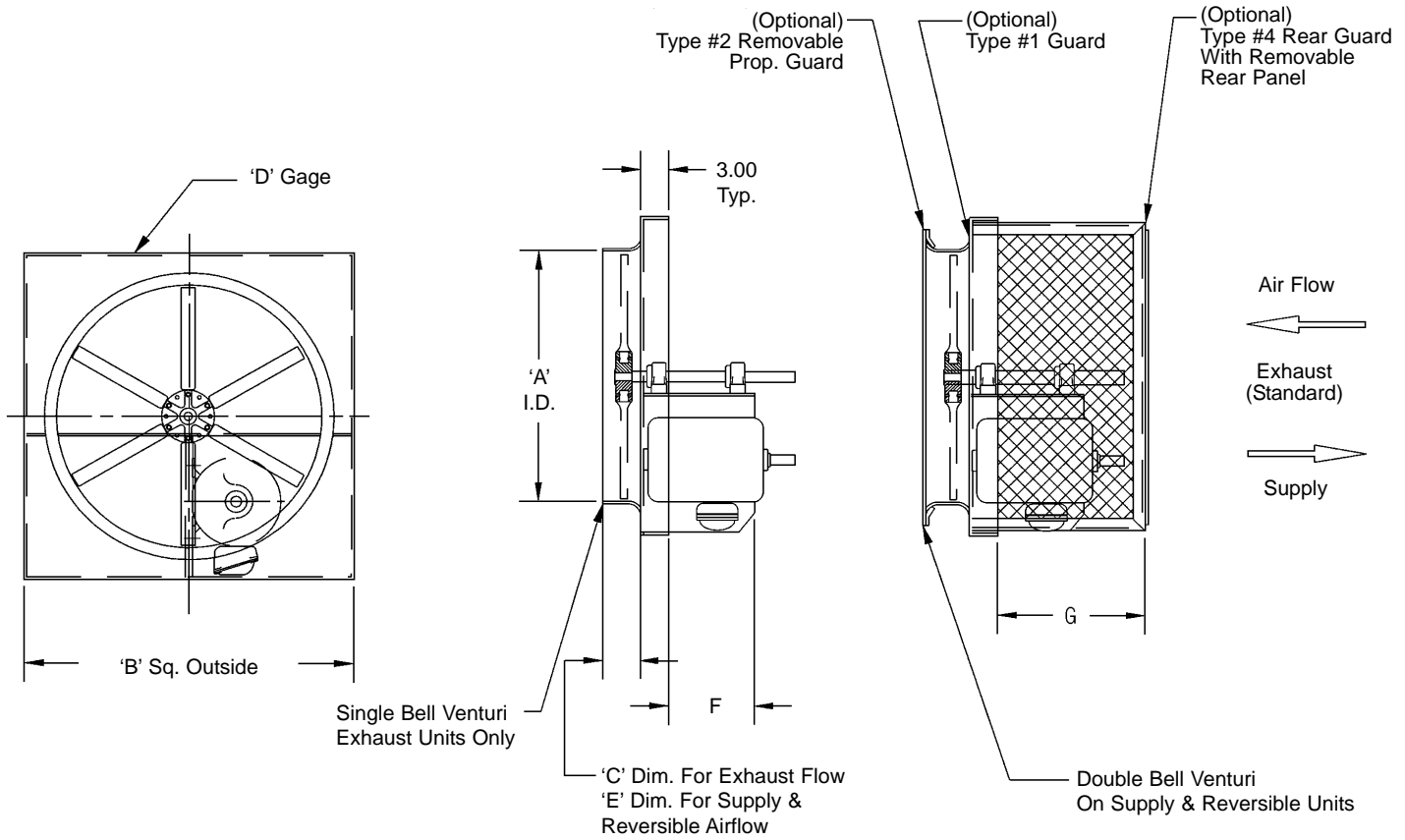
This drawing illustrates our understanding of order requirements. When approved, it represents details for fabrication, as such, PennBarry will not be responsible for revisions in the field or other changes after release for fabrication. Published and protected by PennBarry, Richardson, TX. All rights reserved. May not be reproduced partially or in full without permission from the publisher. No rights conveyed to manufacture partially or in full, use or sell either the method of construction represented or any invention in any way related thereto.

Form ES-MPB-BD1

Revised March 2005

# PNB Panel Fan


## Belt Drive, Designs 1 & 2



### Dimensional Data

Size	A	B	C	D	E	Design 1			Design 2			Unit Weight
						F	G	Max. Motor	F	G	Max. Motor	
<b>024</b>	24.25	28.00	3.00	16	6.13	10.00	15.88	184T	—	—	—	55
<b>027</b>	27.28	34.00	3.00	16	6.13	10.00	15.88	184T	—	—	—	75
<b>030</b>	30.31	36.00	3.50	14	7.50	13.00	18.88	215T	—	—	—	100
<b>032</b>	32.34	38.00	3.50	14	7.50	13.00	18.88	215T	—	—	—	110
<b>036</b>	36.38	42.00	4.00	14	9.00	13.00	18.88	215T	—	—	—	140
<b>042</b>	42.44	48.00	4.75	14	9.75	13.00	18.88	215T	—	—	—	200
<b>048</b>	48.50	54.00	4.75	14	9.75	11.00	17.88	184T	17.00	26.88	256T	280
<b>054</b>	54.56	60.00	5.00	14	11.75	11.00	17.88	184T	17.00	26.88	256T	350
<b>060</b>	60.63	66.00	5.00	14	11.75	11.00	17.88	184T	17.00	26.88	256T	390

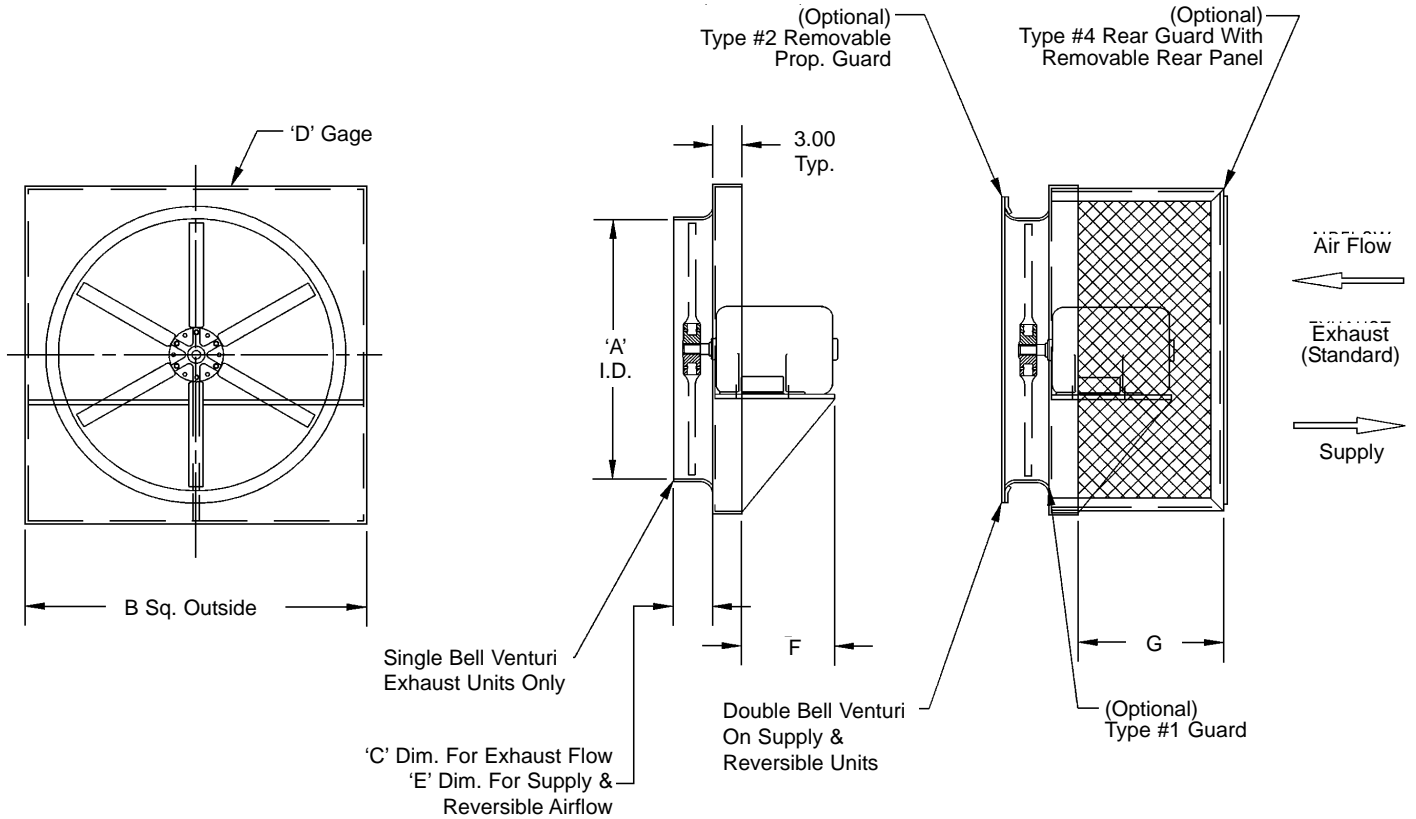
- Notes:**
1. Approximate fan weights are less motor and accessories.
  2. Propeller is six-bladed cast aluminum.

 <p><b>PENNBARRY™</b></p> <p>1401 North Plano Road, Richardson, TX 75081          Ph: 972.234.3202 Fax: 972.497.0468  <a href="http://www.PennBarry.com">www.PennBarry.com</a></p>	<h2 style="margin: 0;">Submittal Sheet</h2> <h3 style="margin: 0;">PNB Panel Fan</h3> <h4 style="margin: 0;">Designs 1 &amp; 2</h4> <h4 style="margin: 0;">Belt Drive</h4>
---	--

This drawing illustrates our understanding of order requirements. When approved, it represents details for fabrication, as such, PennBarry will not be responsible for revisions in the field or other changes after release for fabrication. Published and protected by PennBarry, Richardson, TX. All rights reserved. May not be reproduced partially or in full without permission from the publisher. No rights conveyed to manufacture partially or in full, use or sell either the method of construction represented or any invention in any way related thereto.

# PND Panel Fan


## Direct Drive, Design 1



### Dimensional Data

Size	A	B	C	D	E	F Max	G	Max. Motor	Unit Weight
012	12.19	16.00	1.50	16	4.63	4.13	7.63	145T	15
015	15.19	19.00	2.00	16	5.13	4.13	7.63	145T	20
018	18.19	22.00	2.50	16	5.63	7.31	11.63	184T	30
021	21.22	25.00	2.50	16	5.63	7.31	11.63	184T	35
024	24.25	28.00	3.00	16	6.13	6.56	15.88	184T	40
027	27.28	34.00	3.00	16	6.13	6.25	15.88	184T	60
030	30.31	36.00	3.50	14	7.50	8.63	18.88	215T	80
032	32.34	38.00	3.50	14	7.50	8.63	18.88	215T	90
036	36.38	42.00	4.00	14	9.00	13.63	18.88	256T	110
042	42.44	48.00	4.75	14	9.75	12.75	18.88	256T	160
048	48.50	54.00	4.75	14	9.75	12.81	17.88	256T	200
054	54.56	60.00	5.00	14	11.75	12.19	17.88	256T	240
060	60.63	66.00	5.00	14	11.75	11.88	17.88	256T	270

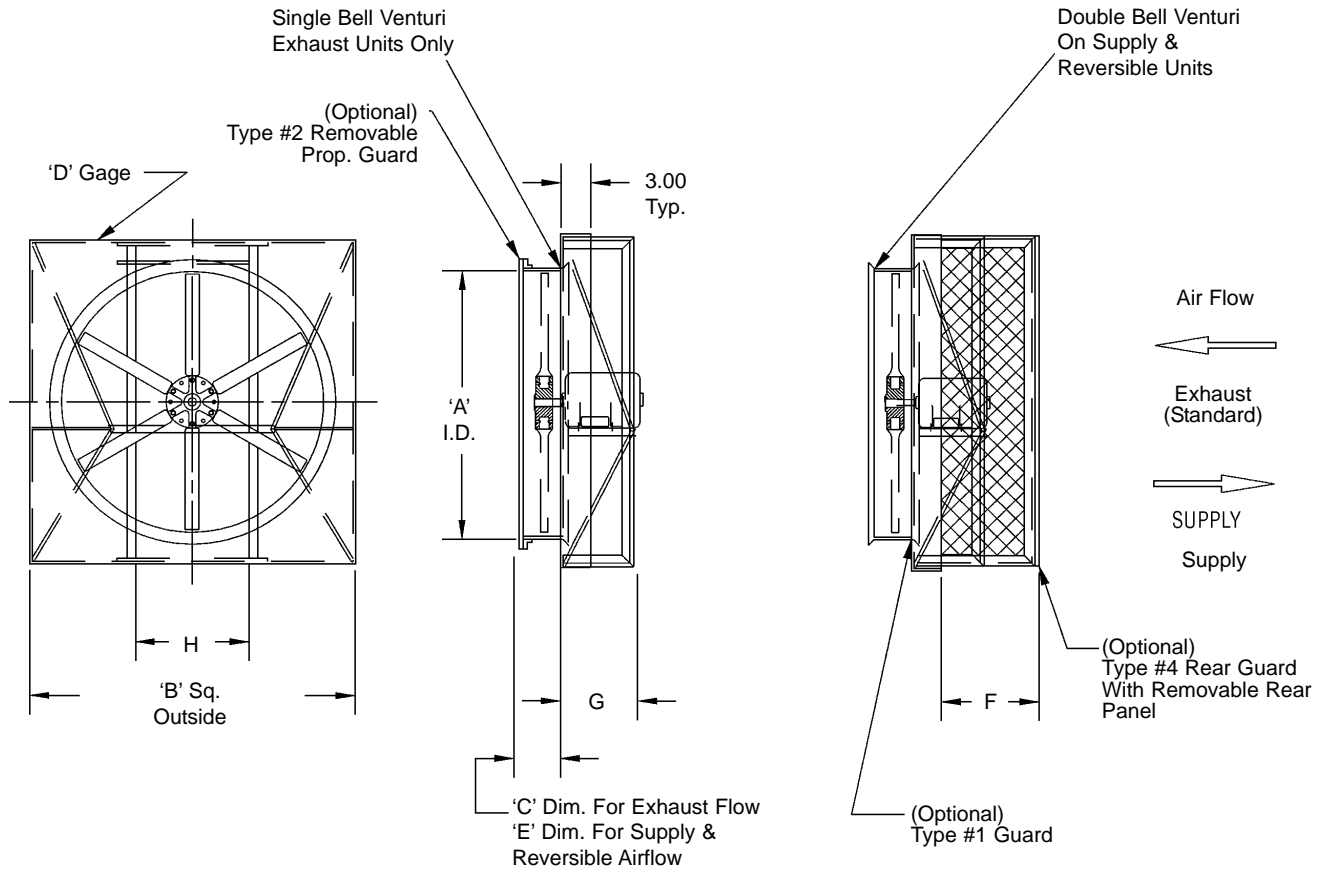
- Notes:**
1. Approximate fan weights are less motor and accessories.
  2. Propeller is six-bladed cast aluminum.
  3. See Direct Drive, Design 2, Submittal ES-PND-DD2, for larger motor frame sizes.

 <p><b>PENNBARRY™</b></p> <p>1401 North Plano Road, Richardson, TX 75081          Ph: 972.234.3202 Fax: 972.497.0468  <a href="http://www.PennBarry.com">www.PennBarry.com</a></p>	<h2 style="margin: 0;">Submittal Sheet</h2> <h3 style="margin: 0;">PND Panel Fan</h3> <h4 style="margin: 0;">Design 1</h4> <h4 style="margin: 0;">Direct Drive</h4>
---	---

This drawing illustrates our understanding of order requirements. When approved, it represents details for fabrication, as such, PennBarry will not be responsible for revisions in the field or other changes after release for fabrication. Published and protected by PennBarry, Richardson, TX. All rights reserved. May not be reproduced partially or in full without permission from the publisher. No rights conveyed to manufacture partially or in full, use or sell either the method of construction represented or any invention in any way related thereto.

# PND Panel Fan

## Direct Drive, Design 2




### Dimensional Data

Size	A	B	C	D	E	F	280 Frame		320 Frame		360 Frame		Unit Weight
							G	H	G	H	G	H	
048	48.50	54.00	4.75	14	9.75	26.88	14.50	24.50	16.25	28.50	17.50	32.50	270
054	54.65	60.00	5.00	14	11.75	26.88	14.50	24.50	16.25	28.50	17.50	32.50	300
060	60.63	66.00	5.00	14	11.75	26.88	14.50	24.50	16.25	28.50	17.50	32.50	350

**Notes:**

1. Approximate fan weights are less motor and accessories.
2. Propeller is six-bladed cast aluminum.

 <p><b>PENNBARRY™</b></p> <p>1401 North Plano Road, Richardson, TX 75081          Ph: 972.234.3202 Fax: 972.497.0468  <a href="http://www.PennBarry.com">www.PennBarry.com</a></p>	<h2 style="margin: 0;">Submittal Sheet</h2> <h3 style="margin: 0;">PND Panel Fan</h3> <h4 style="margin: 0;">Design 2</h4> <h4 style="margin: 0;">Direct Drive</h4>
---	---

This drawing illustrates our understanding of order requirements. When approved, it represents details for fabrication, as such, PennBarry will not be responsible for revisions in the field or other changes after release for fabrication. Published and protected by PennBarry, Richardson, TX. All rights reserved. May not be reproduced partially or in full without permission from the publisher. No rights conveyed to manufacture partially or in full, use or sell either the method of construction represented or any invention in any way related thereto.