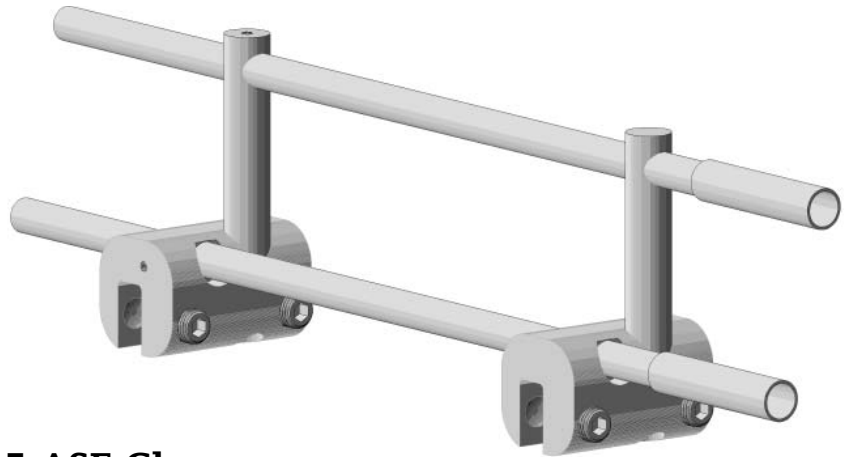


S-5!™

Unprecedented Innovation
Unmatched Quality
Unbelievable Price

SnoRail™/SnoFence™

The SnoRail™/SnoFence™ system is available in brass for use on copper batten or standing seam roofs and in aluminum for other standing seam roofing materials.



S-5-ASF



S-5-AE



S-5-ASF Clamp

These clamps are designed to fit either vertical or horizontal (rotating 90°) seam profiles having a finished seam (thickness) dimension of .40" or less. The clamp is specially designed for versatility on a variety of standing panel seams and profiles — both architectural and structural.

S-5-AE Clamp and SnoPost E™

The S-5-AE clamp and SnoPost E™ are used at the rate of one per 50' of assembly, and at the ends of the assembly to "fix" the SnoRod™, preventing lateral movement.

SnoPost E™



SnoPost™



SnoRod™



SnoRod™ Coupling



SnoPost™

The stainless steel SnoPost™ when threaded into the clamp provides for the addition of a second SnoRod™, about 2" above the first.

SnoRod™

The stainless SnoRod™ is inserted through the S-5-ASF clamps, placing it just above the panel seams. Add a second SnoRod™ through SnoPosts™ for a SnoFence™ system.

SnoRod™ Coupling

The coupling assures end-to-end rod alignment and continuity.

SnoClip™

SnoClip™ can be added to retard the migration of snow and ice beneath the SnoRod™. See the SnoClip™ cutsheet for more details.

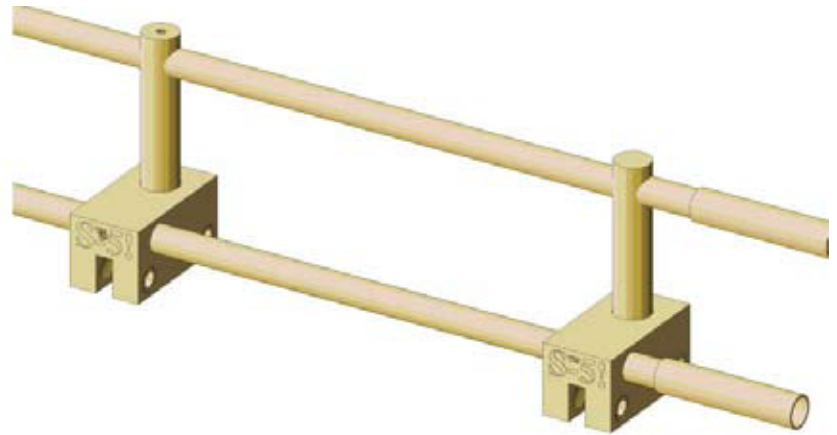
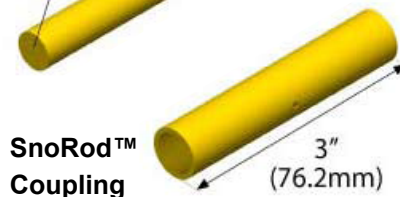
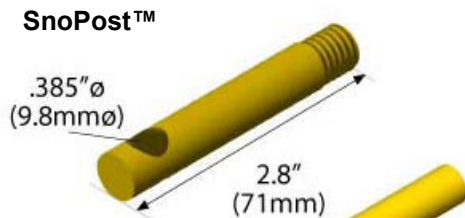
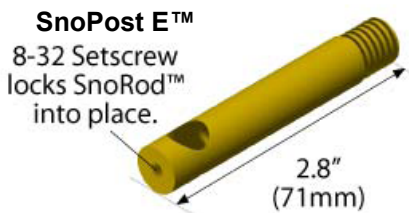
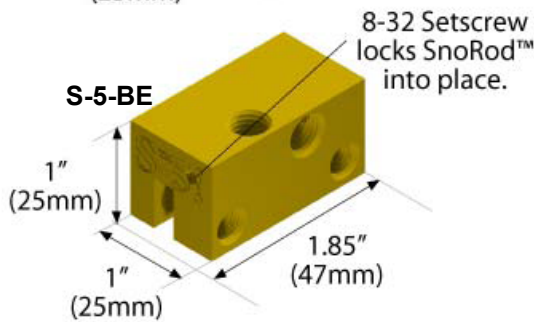
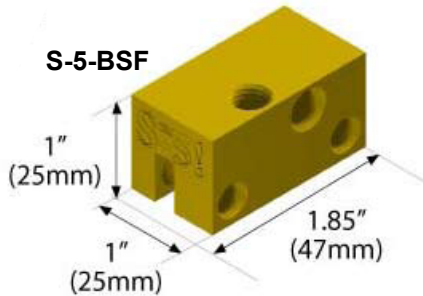


Attach almost **anything** to standing seam metal roofs without piercing the panel!

800-284-1412

www.lmcurbs.com

SNO RAILTM/SNO FENCETM Brass Components



S-5-BSF Clamp

These brass clamps are designed to fit traditional double folded horizontal seam profiles having a finished seam (thickness) dimension of .25" or less. The clamp is specially designed for versatility on a variety of standing panel seams and profiles — both architectural and structural. All components come with required hardware.

S-5-BE Clamp and SnoPost BETM

The S-5-BE and SnoPost BETM are used at the rate of one per 50' of assembly, and at the ends of the assembly to "fix" the SnoRodTM, preventing lateral movement.

SnoPostTM

The brass SnoPostTM when threaded into the clamp provides for the addition of a second SnoRodTM, about 2" above the first.

SnoRodTM

The brass SnoRodTM is inserted through the S-5-BSF clamps, placing it just above the panel seams. Add a second SnoRodTM through SnoPostsTM for a SnoFenceTM system.

SnoRodTM Coupling

The coupling assures end-to-end rod alignment and continuity.

S-5!TM Warning! Please use this product responsibly! Products are protected by multiple U.S. and foreign patents. Please contact S-5! for complete information on patents and trademarks. For maximum holding strength, setscrews should be tensioned and re-tensioned as the seam material compresses. Clamp setscrew tension should be verified using a calibrated torque wrench between 160 and 180 inch pounds when used on 22ga steel, and between 130 and 150 inch pounds for all other metals and thinner gauges of steel. Consult LMCurbs at www.lmcurbs.com for published data regarding holding strength. Copyright 2008, Metal Roof Innovations, Ltd. S-5!TM products are patented by Metal Roof Innovations, Ltd. version 070808