

S-5!®

The Right Way!

SnoClip™

This aluminum component retards the migration of snow and ice beneath the ColorGard® crossmember or SnoFence™ and SnoRail™ systems. It has a special integrated rubber "foot" to prevent abrasion of the panel's finish. SnoClip™ slides onto the back of the crossmember or rod and extends down to the flat of the roofing panel.

IMPORTANT NOTICE! — SnoClip™ design has changed. SnoClip must now slide on from the end of the ColorGard crossmember. Be sure to slide SnoClip onto assembly before attaching crossmember to clamps. A retrofit SnapClip™ is also available from your authorized S-5!® distributor.



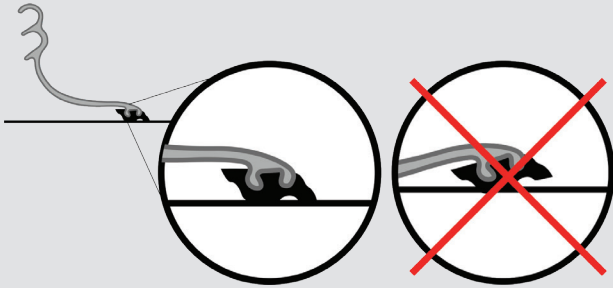
SnoClip™

The right way to attach almost anything to metal roofs!

888-825-3432 | www.S-5.com

SnoClip™ retards the migration of snow and ice when used on S-5![®] snow retention systems.

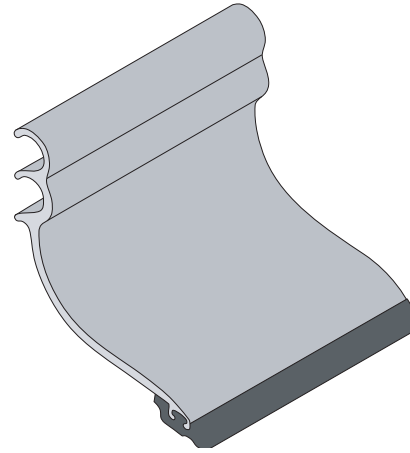
Slide SnoClip™ onto ColorGard® during installation. One or two clips are used between seams (please visit www.S-5.com for details). Slide the SnoClip onto the back of the crossmember or rod (on SnoFence™, use only on lower rod, never use on top rod) using the lock that results with the rubber “foot” resting properly on the panel surface. When applying downward pressure on the part, the “toe” should engage the surface of the panel just before the “heel.” Important: to ensure proper lock positioning, visit www.S-5.com/ChooseYourLock. Periodic maintenance over time may be necessary to ensure that the clips maintain the appropriate positioning, as snow weight may sometimes flip the clip up slightly.



Note: SnoClip should not be used with Brass SnoFence and SnoRail™ on copper roofs.

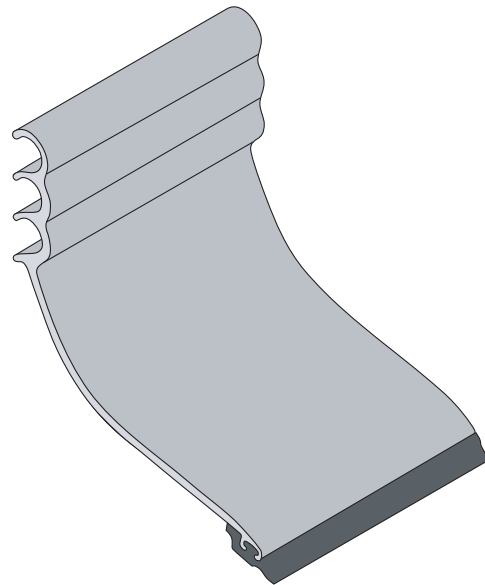
SnoClip II™

SnoClip II™ has two locks and is designed for seam heights of 1" (25 mm) and 1-3/4" (44.5 mm) snap. It will also fit 2" (51 mm) vertical seams, but not 2" (51 mm) horizontal.



SnoClip III™

SnoClip III™ has three different locks and is designed for seam heights of 1-3/4" (44.5 mm) up to 3" (76 mm).



S-5![®] Warning! Please use this product responsibly!

Products are protected by multiple U.S. and foreign patents. For published data regarding holding strength, bolt torque, patents, and trademarks, visit the S-5! website at www.S-5.com.

Copyright 2014, Metal Roof Innovations, Ltd. S-5! products are patent protected. S-5! aggressively protects its patents, trademarks, and copyrights. Version 102414.

Distributed by

P: 800-284-1412
F: 903-759-3598
W: www.lmcurbs.com