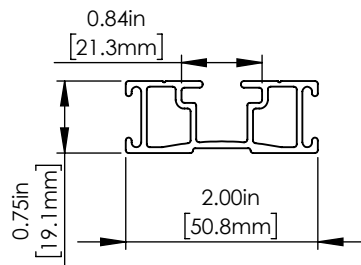


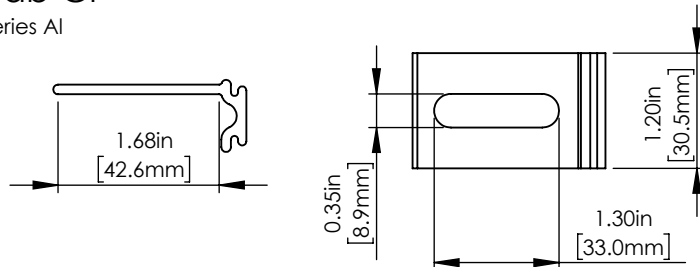
Gripper Strut

6000 Series Al



S-5-Tab CF

6000 Series Al



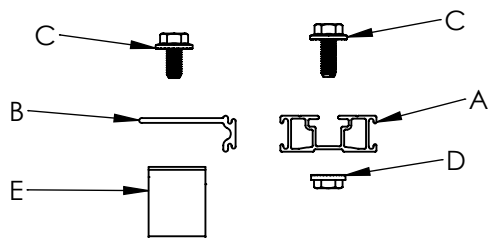
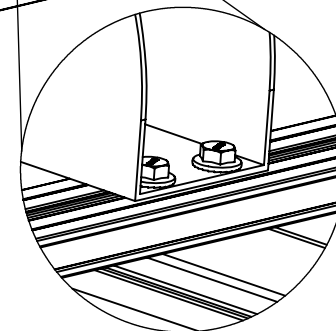
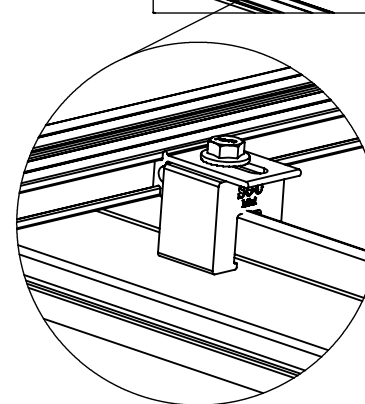
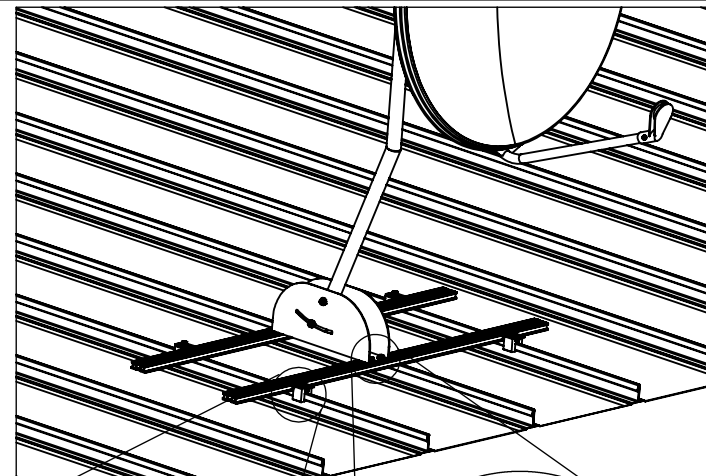
M8-1.25 Hex Flange Bolt Multiple Lengths Available

300 Series SS



M8 Hex Flange Nut

300 Series SS



- A. Gripper Strut
- B. CF Tab
- C. M8-1.25 Hex Flange Bolt
- D. M8 Hex Flange Nut
- E. S-5! Clamp

Distributed by:



P: 800-284-1412

F: 903-759-3598

W: www.lmcurbS.com

**FOR STANDING SEAM SPECIFIC MECHANICAL LOAD TEST
INFORMATION AND CLAMP INSTALLATION INFORMATION
PLEASE VISIT: WWW.S-5.COM**

MATERIAL:	 <div style="display: flex; justify-content: space-between;"> <div>METAL ROOF INNOVATIONS, LTD. 8750 WALKER RD COLORADO SPRINGS, CO 80908</div> <div>The Right Way!</div> </div>		
EST ASSEMBLY WEIGHT:			
SUPPLIED HARDWARE:	TITLE GRIPPERFIX Standing Seam [CCD]		
SCALE: 1:2	DRAWING NO.	DRAWN BY JW	DATE 6/21/2019
<small>S-5!® PRODUCTS ARE PROTECTED BY MULTIPLE U.S. PATENTS INCLUDING 5,228,248, 5,983,588 AND 6,164,033 (OTHERS ISSUED AND PENDING). EUROPEAN PATENTS ARE ALSO APPLIED FOR AND PENDING UNDER THE PATENT COOPERATION TREATY WITH DIVISIONAL FILING RIGHTS RETAINED. METAL ROOF INNOVATIONS, LTD. (LICENSOR OF S-5!® TECHNOLOGY) AGGRESSIVELY PROSECUTES PATENT INFRINGEMENT.</small>			